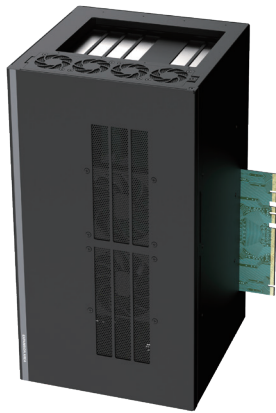


GEB-3601

GPU Expansion Box with 2 x PCIe x16 (Signal PCIe x8), 1 x PCIe x4 and 1 x PCIe x1 Slots for GP-3000 Series



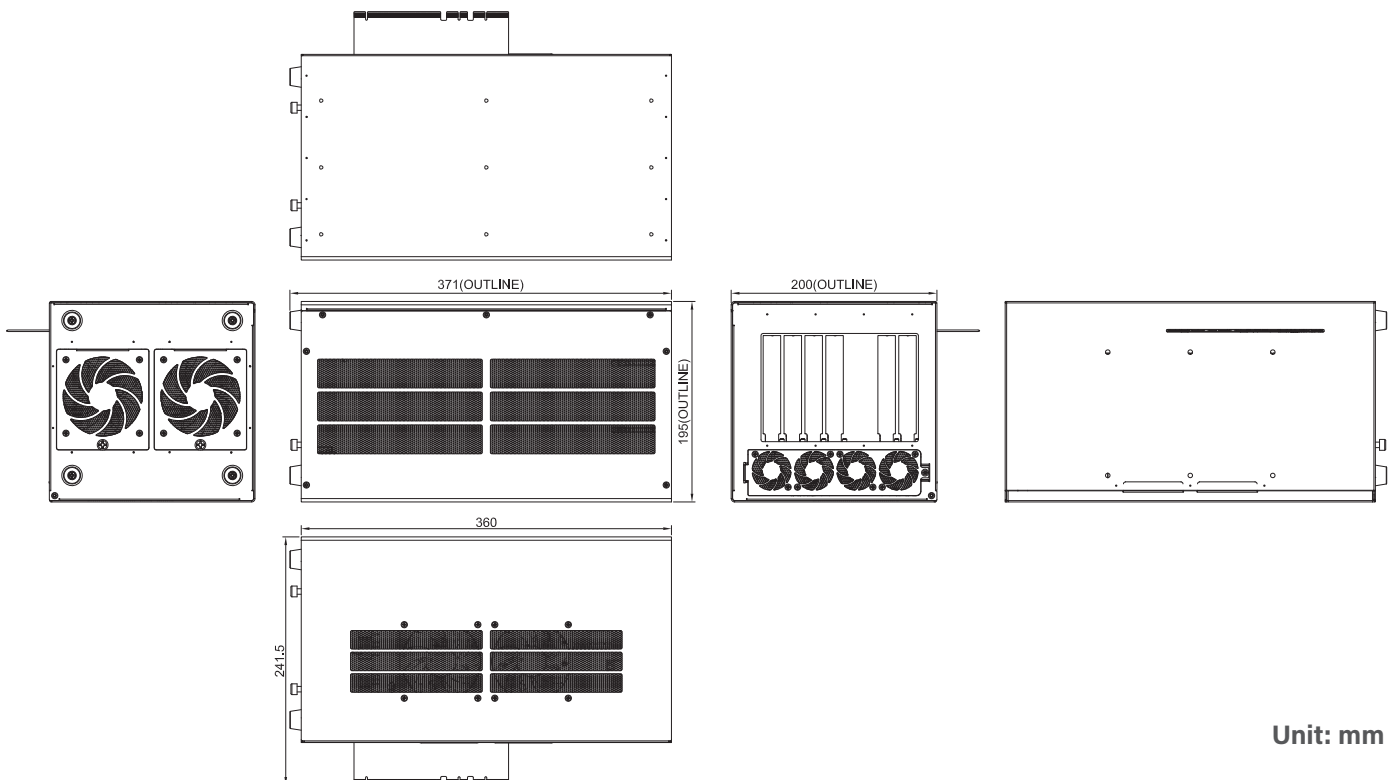
- Supports NVIDIA RTX 30 Series GPU Card
- Supports 2 x PCIe x16 Slots for full-length GPU cards Expansion
- Supports 1 x PCIe x4 Slot and 1 x PCIe x1 slot for Add-on cards
- Intelligent Cooling Design for High Performance GPU Card
- Military Standard Shock & Vibration Proof
- Designed with adjustable GPU card retainer (TW Patent Certificate No: I763318) (US Patent Certificate No: US 11,470,738 B2)



Specifications

Expansion Slot	<ul style="list-style-type: none"> ▪ 2 x PCIe x 16 Slot (PCIe x 8 Signal) for GPU Card ▪ 1 x PCIe x 4 Slot ▪ 1 x PCIe x 1 Slot
GPU Card Dimension	<ul style="list-style-type: none"> ▪ Card Length: 328mm ▪ Card Height: 64mm (Standard Triple-Deck) ▪ Card Width: 138mm
Internal USB	1 x USB2.0, Type A
Internal Power Connector	4 x 8-Pin Connector for GPU Card
Total Power Budget	500W
Weight Information	5.2 kg
Dimension (W x D x H)	200 x 195 x 360 mm
MTBF	1,661,177 hr

Dimensions

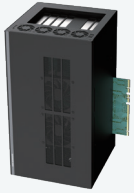


Unit: mm

Ordering Information

Available Models

GEB-3601-R10



GPU Expansion Box with 2 x PCIe x 16 (Signal PCIe x 8),
1 x PCIe x 4 and 1 x PCIe x 1 Slots for GP-3000 Series

Package Checklist



Wall Mount Bracket



4 x 8 Pin to 6+2 Pin GPU Power Cable



2 x Screw Pack



1 x GPU Card Retainer Screw Pack



1 x Rubber Foot Kit



4 x Sponge